

MACHINES

# AssemblyLine



## AssemblyLine - Micro Assembly Solutions

This ficonTEC series of machines is focused on industrial micro assembly processes. The high precision motion system combined with an open software platform allows the integration of a large number of applications in micro optics and mechanics assembly and test. Permanent vision and force control ensures high precision assembly, especially for very sensitive components.

### Best Solutions for Best Practice

- + Diverse applications
- + High precision
- + High degree of accuracy
- + User friendly
- + Device size adaption

### Key Features

- + Full Automatic Optic Assembly System
- + Multiple Components of various size
- + Beam Analyzing System
- + FAC Attachment
- + SAC Attachment
- + Mirror Attachment process
- + Precise Epoxy Dispensing
- + Autotracking for Shrink compensation
- + Batch Processing



As a unique feature all ficonTEC machines offer a sophisticated component tracking throughout the entire machine process. All machines run the same machine software for easy operation and portability.

## System Set-up

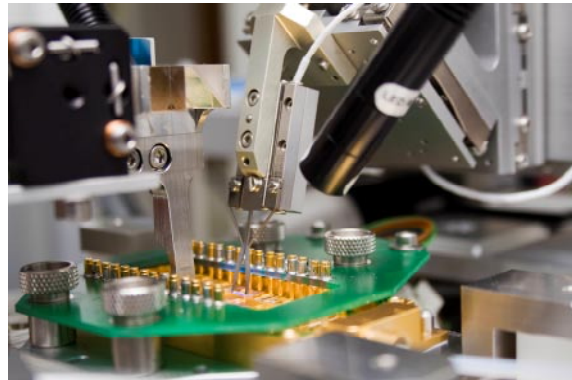
- + Z-Stage with camera
- + 6 Axis alignment stages
- + Beam analysis system
- + Dispenser
- + UV LEDs



AutoAlign System

## Diverse Tools

- + 4 x 2" GelPak vacuum release field
- + Bottom camera for machine calibration and component measurement
- + Easy to place PCB with probes to contact single emitters
- + Probes up to 20 A current per emitter qcw
- + Chuck can be released by vacuum for easy placement of customer devices
- + Athermal chuck with temperatur control 20°C - 68°C



Gripper with Lens and BCT inside Package

## Beam Characterization Tool (BCT)

- + Component gripper
- + Periscope to defect beam outside the package
- + Far field / Near field lens
- + Folded beam with 400 mm length
- + Power meter head
- + Beam splitter
- + Beam analysis camera with ND filter



Set-up of Beam Characterization Tool



## Contact us worldwide

### EUROPE

ficonTEC Service GmbH (Headquarter) • Desmastraße 3-5 • 28832 Achim • Germany  
Phone: +49 (0)4202 51160-0 • Fax: +49 (0)4202 51160-90 • [info@ficontec.com](mailto:info@ficontec.com)

### USA

ficonTEC (USA) Corporation • 25 Calle Canela • San Clemente, CA 92673 • USA  
Phone: +1 949 388-5800 • Fax: +1 949 388-1489 • [usa@ficontec.com](mailto:usa@ficontec.com)

### ASIA

ficonTEC Service GmbH Shanghai Rep. Office • Rm. 1038, Central Plaza  
No. 381 Huai Hai Zhong Road • Shanghai 200021 • China  
Phone: +86 (0)21 52730985 • Fax: +86 (0)21 52730985 • [china@ficontec.com](mailto:china@ficontec.com)

[ficontec.com](http://ficontec.com)